



RADIUS INFOTECH PVT. LTD.

- Established In **2007**
- Based out of India, HQ at **New Delhi**
- Certified: **ISO 9001 & ISO 27001**
- Authorized Distribution & Service Partner: **MAGNETIC,NOVUS**
- More than **17+ Years** in field of Technology & Innovation
- Part of **Radius Group of Companies (Since 1994)**

Group Companies

- Radius Infotech Services (P) Ltd.
- Softone Solutions (P) Ltd.
- Xenius Energy Solutions (P) Ltd.
- Radius Marketing (P) Ltd.
- Radius Synergies (P) Ltd.

 **Proud to be 1st in the industry**
AMR based pre-paid metering solution

We were first company in INDIA to launch software based pre-paid electricity metering solution in early 2000.



FTTH Solution

Using NANO technology (**Patented**). All the services including voice, video and data of multiple service providers delivered using fiber to the home network. Technology Partner – **Ericsson**.

CURO SUIT PRODUCTS



AUTOMATED PARKING
MANAGEMENT SYSTEM



SOCIETY & VISITOR
MANAGEMENT



VISITOR MANAGEMENT
SYSTEM



ACCESS CONTROL
SYSTEM



TOUCHLESS ELEVATOR
APPLICATION



AUTOMATED ATTENDANCE
SYSTEM



CUROPARK

PARKING MANAGEMENT SYSTEM



Parking Challenge

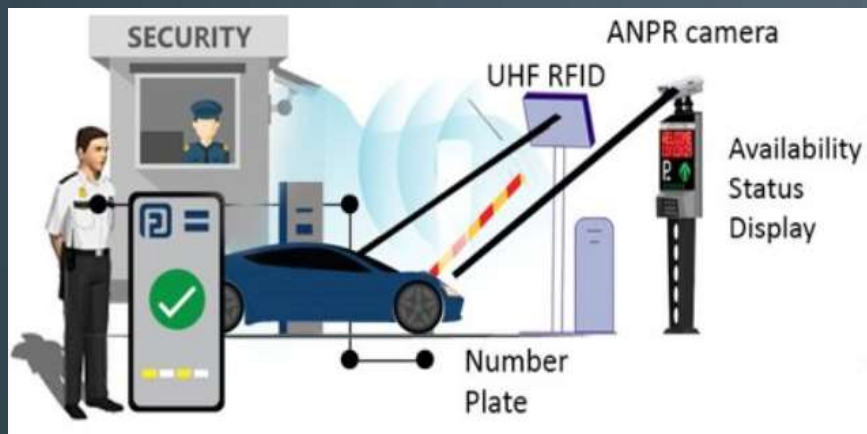
- Long queues at the mall can be a frustrating experience
- Losing a parking token can result in additional costs
- How can I locate my vehicle?
- FOC to the customers at a mall
- Issue pass periodically
- Fraudulent fare collection practises
- View Real-time parking statistics
- Parking fair configuration
- Vehicle blacklist/blocking
- Versatile MIS Reports.
- Vehicle security

ABOUT CUROPARK

- **CuroPark** is a one-point **parking** solution. It is a **commercial business** centers and paid parking solution, designed and developed as per requirements of clients.
- It helps commercial building management to more efficiently manage parking allocation between companies and visitors.
- This solution will help in automation of day to day working of parking system. Also manage parking for cabs and guests.
- It facilitates first come first basis to the authorized person. Parking can be reserved for the senior management.
- Employees can view availability in their company parking real-time with mobile app.
- A person can search and pre-book the parking using mobile app and pay digitally.



WITH AUTOMATION SOLUTION



UHF RFID
100% Accuracy

Smooth and quick entry/exit
Complete record of vehicle movement
Low manpower required



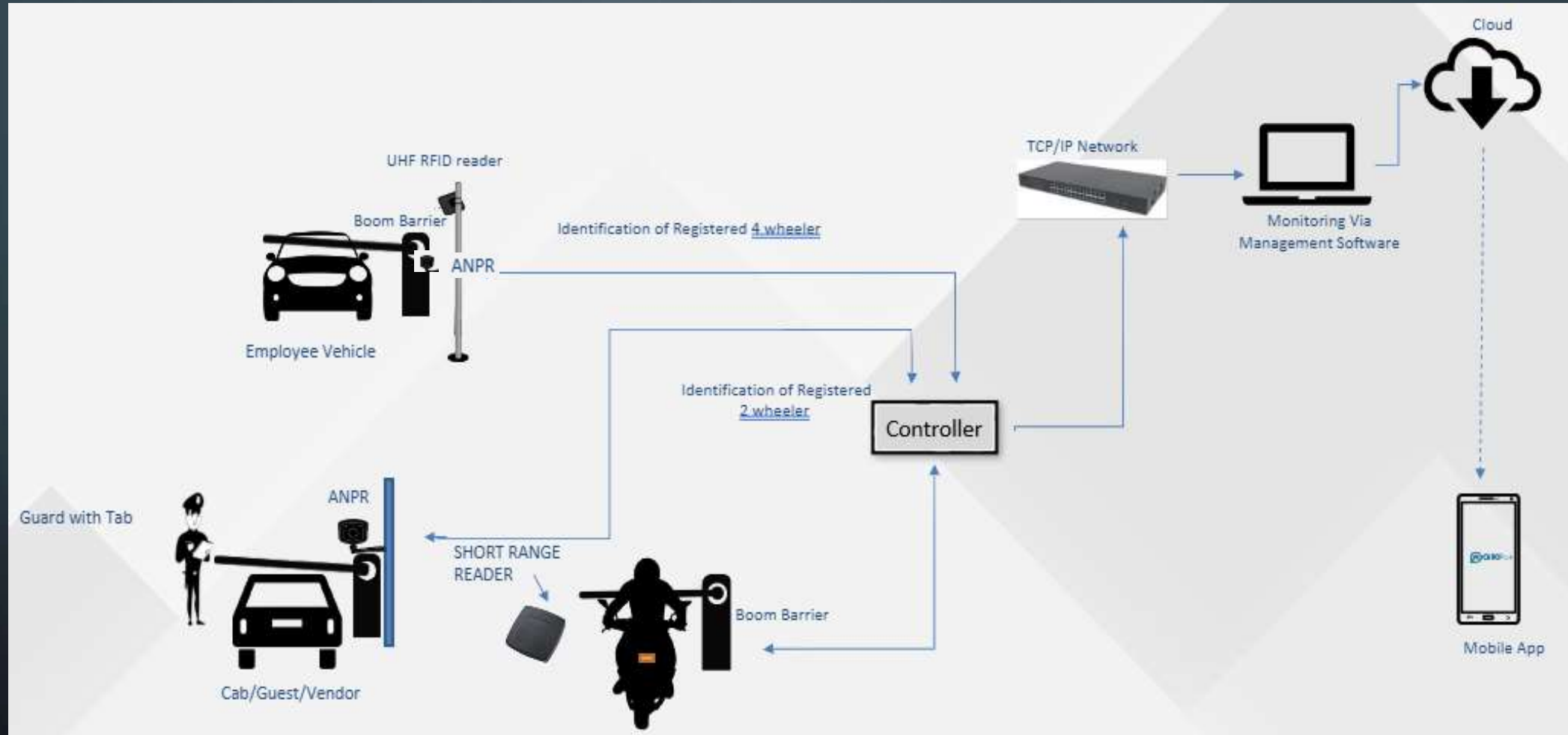
Proximity Card
100% Accuracy

Real time parking availability information for
employees of a company
Pay without cash at parking

BASIC PURPOSE

- To avoid unauthorized parking.
- To avoid unnecessary chaos and traffic in campus and at entry and exit time.
- To keep transparency of parking slots available & occupied.
- Smooth maintenance of allotted parking slots.
- Maintain complete database of all vehicle holder for any emergency.
- Manage Guests and Cabs.
- Maintain Security and avoid hazards.
- Keep proper records of all entry and exit vehicles.

FLOW OF CUROPARK SOLUTION



SOME BASIC FEATURES OF CUROPARK



Employee Parking

Employees vehicles will be allowed in parking as per availability of parking associated with employees company. Company admin can reserve parking for employees.



Cabs Parking

All vendors and cabs allocated to company can be pre-defined in system. Cabs will be allowed only as per availability of parking associated with the company.



Guests Parking

Company admin can pre-define guests visiting in company. Guests can be given parking from company allocated parking or facility parking as per criteria set.



APPLICATION

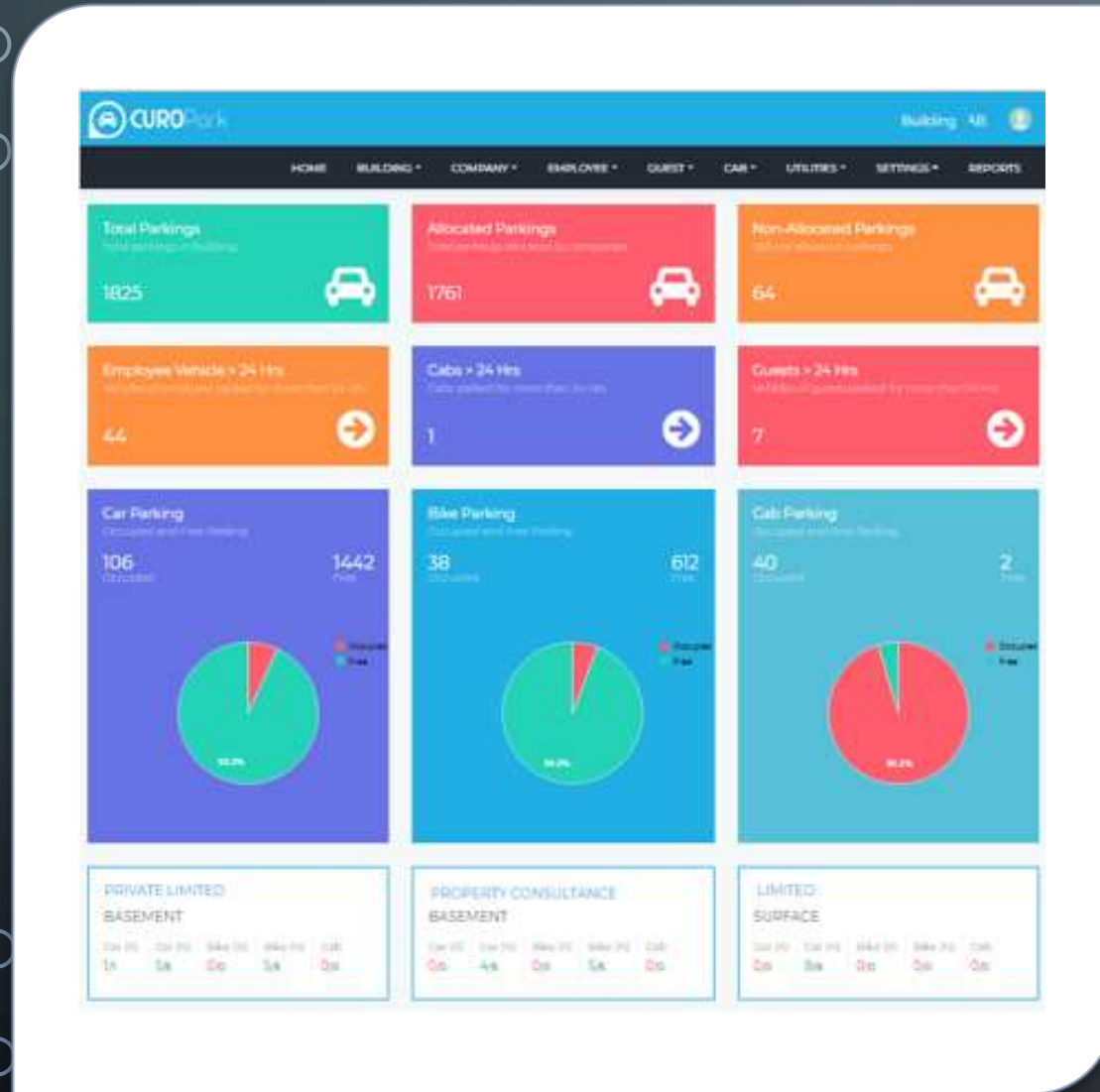
IOT AUTOMATION

- Automated Tag reading/ANPR/ QR CODE for 4 wheelers.
- Separate Access Card based reader/ANPR/ QR CODE for 2 wheelers.
- Automated Barrier Operation for Entry/Exit.
- Entry allowed as per company parking availability.
- Maintains availability of company parking.
- Exit as per security settings by user.
- Block vehicle exit as per settings by building admin.
- Data to Cloud/Local Server.
- Works Offline.

WEB APP

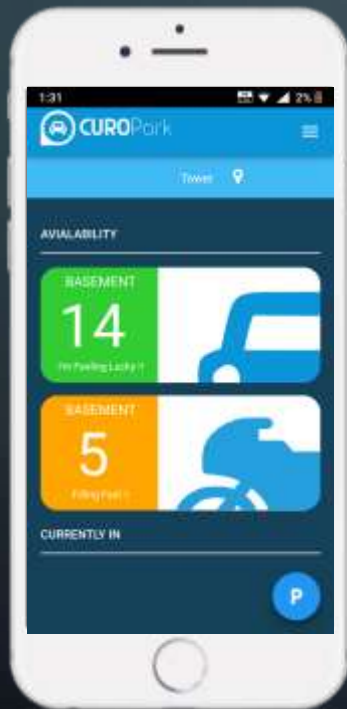
MANAGEMENT WEB APPLICATION

- Role based Management Application.
- Manage company parking/availability.
- Reserve Employee vehicle/Female Reservation.
- Manage Guests/Cabs/Vendors.
- Security settings for vehicle exit.
- Analyze data & view Entry/Exit Images.
- Management Reports.
- Blacklist Vehicles.



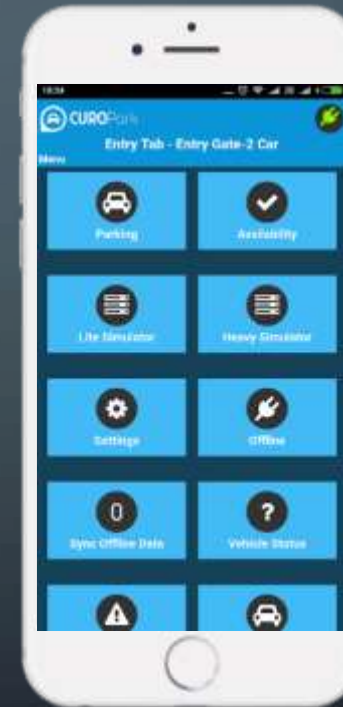
CUROPARK MOBILE APP

Employee's Mobile App



- Single App for multiple buildings.
- View parking availability real time.
- View currently allocated parking slot.
- Change parking Slot.
- Set security settings for vehicle exit.
- Allow/Block vehicle exit.
- Company admin can add guests.

Guard's Mobile App



- View vehicle allowed/stopped status real time.
- View company parking availability.
- Check vehicle current parking status.
- Manage Employees/Guests/Cabs entry/exit.
- Allow/Block vehicle to exit.
- Manage Paid Parking.
- Maintains offline availability count and sync once online.

SOLUTION OFFERING

Parking Management System

- Automated Tag reading/ANPR & RFID for 4 Wheelers.
- QR CODE /Access Card based reader for 2 wheelers.



ORIGINAL IMAGE FROM IMAGE CAPTURING CAMERA

LPRCMS

22/11/2022 Tuesday 5:03:58 PM

Dashboard

Configuration

Reports

- LPR
- LPR Hourly
- In-Out
- Exit Vehicle API
- Face Detection
- Face Analysis
- LPR Analysis
- LPR/Face Analysis

Plate No :- DL2CAE8269

Vehicle

Plate No

Face :- Driver & Passenger

Showing 21 to 30 of 351 entries

Previous 1 2 3 4 5 ... 36 Next

Data send	100	2022-11-21	20
to server is	22:06:32.488	22	
disable			
Data send	88	2022-11-21	20
to server is	22:05:55.936	22	
disable			
Data send	100	2022-11-21	20
to server is	22:05:24.606	22	
disable			
Data send	78	2022-11-21	20
to server is	22:04:57.532	22	
disable			

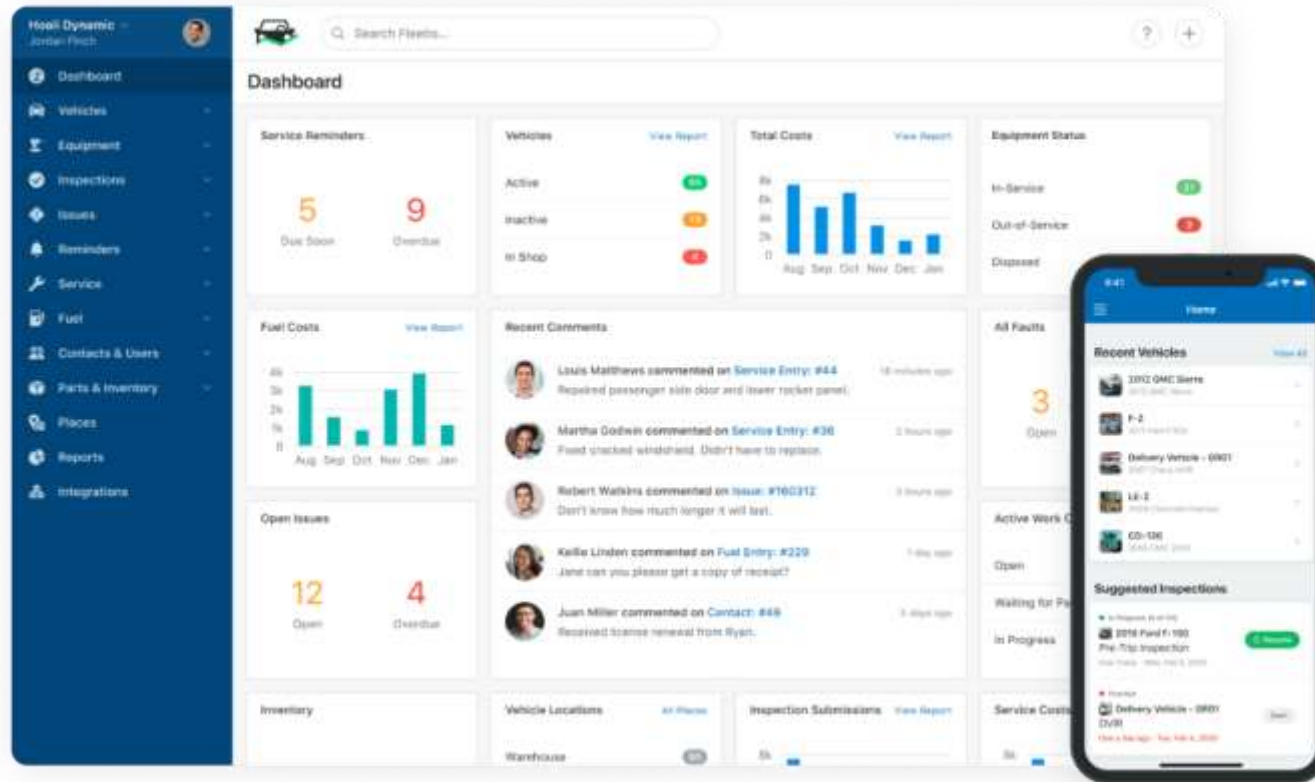
ORIGINAL DISPLAY BOARD

www.curopark.com



ADMIN DASHBOARD & MOBILE APP

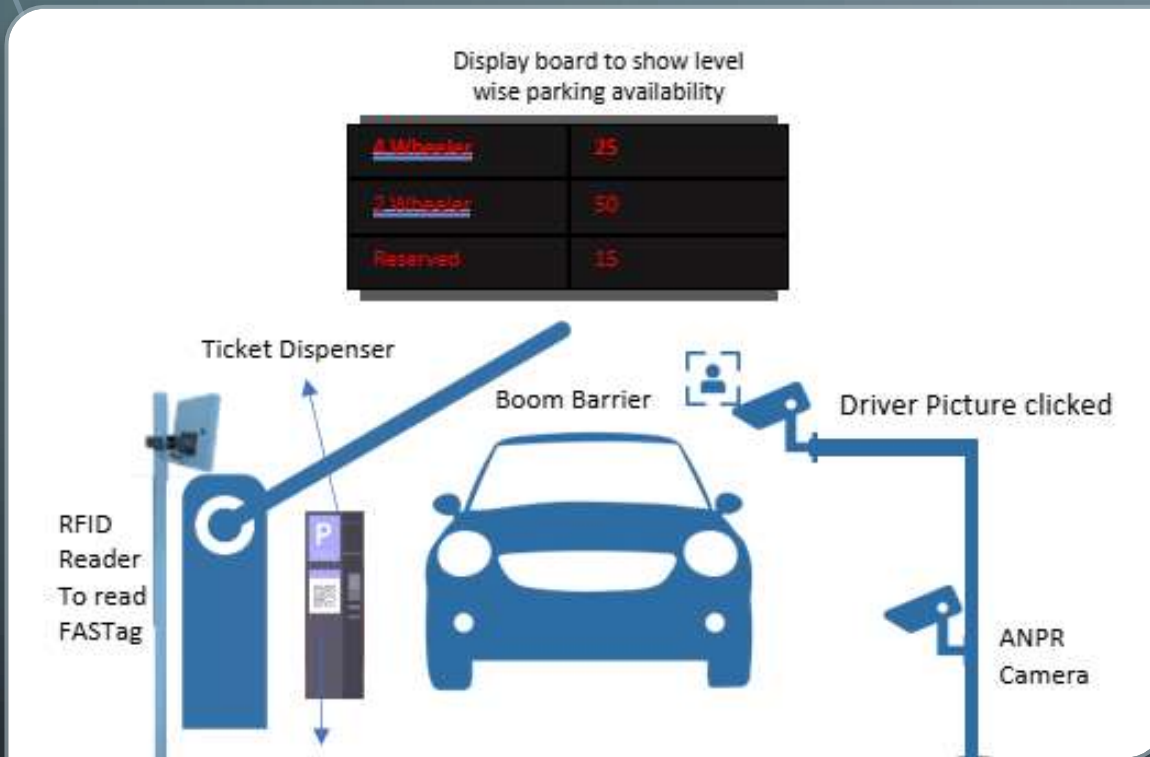
- Can add, delete & modify free parking users
- Issue pass periodically
- View Real-time parking statistics
- Parking fair configuration
- Vehicle blacklist/blocking
- Versatile MIS Reports.
- Minimum data storage for 1 month and it is expandable.





SENSOR BASED PARKING MANAGEMENT SYSTEM

PARKING ENTRANCE SYSTEM



- § ANPR cameras read the number plate of vehicles entering the parking or RFID Reader to read FASTag and provide entry.
- § Just wave your hand in front of the ticket dispenser to get your ticket parallelly IP camera captures the driver image.(incase *RFID/ ANPR* doesn't read the vehicles details.)
- § Display board showing **parking availability** level wise
- § The boom barrier open and a car enters the parking lot.

ONE AND MULTI DIRECTIONAL DISPLAY TO SHOW THE PARKING AVAILABILITY



SEEK A WAY TO AVAILABLE PARKING ZONE

- The multidirectional display for parking slot availability guidance system will direct you to available parking zone by using display.
- We will install parking sensors & LED Sensor at each slot, as well as displays to navigate your assigned empty Zone. Also, there will be signage's to guide parking zone
- Device will be installed on every slot to find empty slot.
- Level wise display will be installed.



PARKING GUIDANCE SYSTEM

- Users can park their vehicles in vacant slots and covering adjacent slots can be checked and notified.
- App provides directional navigation to the parked vehicle through third party indoor navigation.
- Real-time parking availability can be checked.



SENSOR BASED PARKING GUIDANCE SYSTEM

SENSOR BASED PARKING GUIDANCE SYSTEM



PARKING AVAILABILITY DISPLAY AT ENTRY TO SHOWCASE THE FLOOR-WISE PARKING AVAILABILITY

- Parking sensors to get the occupancy information.
- Show users for parking lot availability through Red / Green light.
- Display in the driveway to showcase the nearby parking availability.

SENSOR-BASED PGS GENERATION

SENSOR-BASED PGS – PRIMITIVE TYPE

Communication mode - RS 485 / Modbus

Pros

Less cabling, less cost

SENSOR-BASED PGS – ADVANCED TYPE

Communication mode - ethernet

Pros

Real time communication,
hence real time information
update on Parking display





ADD ON BENEFITS

- Strict surveillance.
- Handy User-Friendly Mall Information APP.
- Offering loyalty bonuses to frequent visitors.
- Increased footfall resulting in increased revenue.



CONCLUSION

Innovative Parking Management System and Parking Guidance Systems are changing the way drivers park, making the process **easier, faster, and more efficient.**

By implementing a management & guidance system, parking facilities can improve the overall parking experience for drivers and increase their own revenue.



THANK YOU